



**EXPLORE YOUR
FUTURE**

CONTENTS

1	Welcome
2	Why choose us?
4	Supporting You
5	Student Support
6	Our Vision and Values
7	Your Future Starts Here
8	Student Destinations
10	Student Voice
11	Our Pathways
12	Exponentials Pathway
13	Science Scholars Pathway
14	Quantum Pathway
15	English Pathway
16	Engineering Pathway
17	Business & Economics Pathway
18	Creatives Pathway
19	Sports Honours Pathway
20	Healthcare Pathway Pathway
21	Social Sciences Pathway
22	What Should I Study?
23	A-Level Courses
26	Advanced Applied Courses
28	Pathway Plus
30	Facilities
33	How to Apply





YOUR FUTURE STARTS HERE.

Are you looking for a Sixth Form where you will be supported to fulfil your potential and achieve your future ambitions? Then look no further.

At North Liverpool Academy Sixth Form, we offer a high-quality Post-16 provision for the students of our Sixth Form.

As part of this provision, we ensure our curriculum areas provide meaningful experiential learning that creates opportunities for students to apply their knowledge and curiosity in solving real world challenges.

By providing these pivotal experiences and high-quality education, we empower our students with the necessary skills and confidence to compete nationally and internationally for the top universities and employers.

I hope this prospectus gives you an insight into life at North Liverpool Academy Sixth Form, if you have any questions about our Sixth Form, please contact us;

Andrew Johnston
Head of Sixth Form
Email johnston.a@nla.uk.com

Emily Vernon,
Principal



WHY CHOOSE US?

NLA Sixth Form offers life changing opportunities for students. We have pathways for a broad range of career opportunities, from Science Scholars to Exponentials and we also offer a full range of Level 3 qualifications including A-level Further Maths, Biology, Chemistry, Computer Science, Economics, Maths, Physics, Psychology and much more.

Alongside building curriculum skills and knowledge with our team of experienced KS5 teachers, you will be challenged to succeed in all aspects of Sixth Form. You will take part in university residentials, subject masterclasses, work placements, summer schools, EPQ projects and many more opportunities that will improve your academic success and help with secure your next destination.

Our career coaches are on hand to guide you through university, employment or apprenticeship applications and interviews, helping you to secure an exceptional next step. We also have qualified teachers who support students with Oxbridge, Medicine, Dentistry and Veterinary Science applications, students are offered tailored individual support for their entry examinations, portfolios and interviews.



Dedicated
Honours
programme for
high achievers

Coaching programme
to help all students
fulfil their potential

Dedicated Scholars
programme designed
to raise the aspirations
of all students

UK and
international
study visits

Friendly, supportive
and ambitious
student community

Financial support
package for eligible
students

Labs and workshops
equipped to
university standard

SUPPORTING YOU

We pride ourselves on the range of experiences and support we provide our students, from study and revision to support with UCAS applications, apprenticeships and careers.



Mrs Nash-Parho

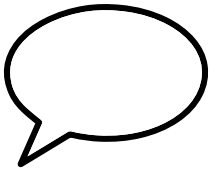
UCAS Coordinator and Sixth Form Mentor

"You'll find Mrs Nash-Parho in the Sixth Form Learning Resource Centre. She is responsible for your day-to-day pastoral support and also leads our UCAS support programme. Mrs Nash-Parho is available throughout the day to advise on your plans for progression beyond Sixth Form.

She is likely to be the first staff member that you see each morning, and the person to talk to if you have any questions or problems. Mrs Nash-Parho meets all Y11 applicants before they join our Sixth Form to help advise and reassure them as they make the transition to KS5. She is always on hand to support you in your studies and advise you on university choices or apprenticeships."

**"STUDENTS IN SIXTH FORM,
BENEFIT FROM A WELL DESIGNED
CAREERS PROGRAMME. THIS
HELPS TO RAISE PUPILS'
AMBITIONS AND IMPROVES THEIR
EMPLOYABILITY"
OFSTED, 2022**

STUDENT SUPPORT



Pastoral Support

We care for your emotional, psychological and spiritual wellbeing. During your Pastoral Studies sessions, you'll learn study and life skills essential in higher education and your career.



Learning Support

We ensure we offer all the necessary support to make your time at Sixth Form enjoyable. Our Sixth Form team are here for you every step of the way to support your progress towards excellent grades.



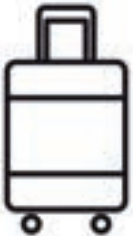
Counselling Service

A warm, confidential, and non-judgemental environment to talk and truly be heard. Our counselling Service empowers you to develop the skills and the confidence needed to bring about long lasting, positive change.



Financial Support

We ensure that eligible students are supported throughout their studies and we offer students financial support to cover education-related costs such as study resources and experiences.



Careers Support

Our careers team are there to support you to achieve your future ambitions. Each student will receive one to one careers advice to explore careers in your area of interest. "Students in Sixth Form, benefit from a well designed careers programme. This helps to raise pupils' ambitions and improves their employability" OFSTED, 2022

OUR VISION AND VALUES



All young people make exceptional progress whatever their background – academically, socially and emotionally through world class learning opportunities. Our resilient students will be responsible active citizens, who can compete and thrive regionally, nationally and globally.

Aspire

I will be the best version of myself – academically, socially and emotionally, always taking responsibility for my own actions. I will strive to progress and achieve, pursuing my dreams to fulfil my true potential within and beyond school.

Community

I will respect all members of our school community, making responsible decisions and influencing others for the benefit of everyone.

Experience

I will be determined to succeed, actively seeking new experiences to improve my progress and my own learning with great resilience.

YOUR FUTURE STARTS HERE!

It's our job to make sure that whatever you want to do – whether it's university, an apprenticeship or heading into the world of work – you have the skills and qualifications you need to succeed.

Following a pathway at NLA Sixth Form will make sure that you have both the qualifications and the extra-curricular experiences to stand out from other applicants.

The University of Liverpool
As a North Liverpool Academy student, you can apply to become a Liverpool Scholar, if you choose the University of Liverpool as your first-choice destination, you'll be eligible for a grade reduction from your chosen course as well as being assigned a university mentor.

Our **Year 13 Leadership, Apprenticeship and Employment Programme** is there for you if you decide that university's not the right path. Starting in January of Year 13, weekly sessions help you to prepare your applications, covering CVs and cover letters, interview techniques and focus on specific pathways into apprenticeships or employment.

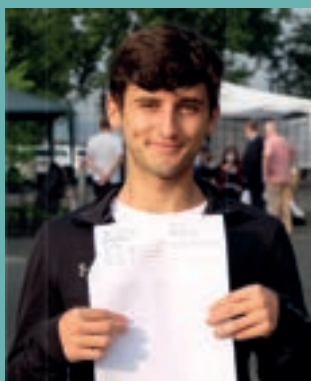
We help you **access real world working environments**. The Northern Schools Trust has links to more than 50 local businesses, who provide mentoring, masterclasses, workshops and placements for our students. We also work closely with Liverpool City Region's Apprenticeships Hub, to make sure that our students have access to the skills the region needs.

Our NLA alumni have headed for destinations including:

University of Liverpool, University of Manchester, Newcastle University, Leicester University, Liverpool John Moores University, Cardiff University, University of Lancaster, University of Sussex, London College and Birmingham City University, University of Bristol, Royal Holloway, Imperial College London, University of Oxford, University of Cambridge.

Student Destinations

Enis



Physics - A*
Maths - A*
Further Maths - A*

**Oxford University
Physics**

Feiyang



Maths - A*
Further Maths - A*
Physics - A*

**Oxford University
Mathematics**

Tao



Physics - A*
Chemistry - A*
Maths - A*
Further Maths - A*

**Imperial College
London
Computer Science**

Benny



Economics - A
Maths - A*
Further Maths - A

**University of Warwick
Computer Science**

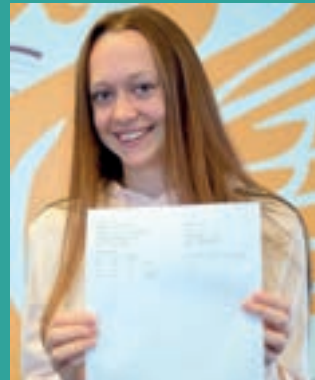
Meng



Maths - A*
Further Maths - A*
Physics - A*

**Imperial College
London
Physics**

Ellie



Maths - A
Biology - B
Chemistry - B

**Royal Veterinary
College London
Veterinary Medicine**

Caitlyn



Physics - A*
Maths - A
English Language - A

**University of
St Andrews
Astrophysics**

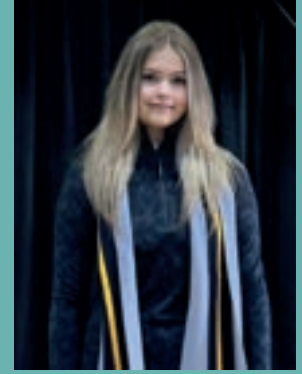
Salma



Maths - A*
Biology - A*
Physics - A*
Chemistry - A*

**University of
Liverpool
Computer Science**

Eve



History - A*
English Language - A*
Psychology - A*
Sociology - A*

**University of
Cambridge
History**

John



Physics - A*
Maths - A*
Further Maths - A*

**University of
Cambridge**

Bashar



Biology - A*
Chemistry - A
Maths - A*

**University of
Cambridge
Medicine**

Danie



Biology - A
Chemistry - A
Maths A*

**University of
Cambridge
Medicine**

STUDENT VOICE



Bashar Rovezi

Studying Maths, Further Maths, Biology and Chemistry is not easy, but with the support and guidance from the Sixth Form team, I am confident that I will achieve the best possible outcomes. The Sixth Form team and subject teachers also provide high quality extra-curricular experiences outside of the classroom which will help me when applying to University. NLA have already offered me prestigious experiences such as a residential in Oxford University, work experience at Biograd, NHS Seminars, Investec Programme, Liverpool Scholars Programme; the list goes on. Brilliant teachers and staff have put me on the path for the best Universities in the world and a platform for me to have a success for the future.



Ahmed Abdulqader

The endless opportunities I've experienced over my previous 5 years of studying at North Liverpool Academy is what interested me to continue my studies at this Sixth Form. Accomplishing my goal to study medicine will be a real challenge but with the reputable opportunities in my subjects of Chemistry, Biology, Maths and Further maths I can confidently say that this Sixth Form will best support my applications. North Liverpool Academy has already offered me a plethora of experiences such as work experience at BIOGRAD, Investec programme, Uni of Liverpool's Scholars programme and countless subject related trips with more to come, the opportunities are immeasurable at North Liverpool Academy which combined with the endless hours of time teachers and mentors put in for us, it is only irrefutable that we will be successful in the future.



Sharon Chen

Studying at North Liverpool Academy Sixth Form was the obvious choice for me. I always wanted to join Sixth Form because I realised that I would have specialist teachers in the subjects that I wanted to study, who over the years have achieved outstanding results at A-Level. I know that I will be pushed academically and the Sixth Form team will ensure that I believe in myself and always have high aspirations, already I know I want to attend an elite institution or a Russell Group university. So far in Year 12 I have been given the opportunity to complete an EPQ, participating in Ritangle, senior girls Olympiad, and soon 'Seas Your Future' as well as a trip sailing across the Irish Sea which is linked to my studies.



Esther Idahosa Osayande

Joining NLA Sixth form has enabled me to already have a real perspective towards the competitiveness that I'll have to overcome in order to achieve my future goals. Every single student is determined, focused and resilient to succeed in their chosen pathways. This is also down to the help and support of the Sixth Form team, I'm sure that everyone of us will excel in our courses and future destinations. I am currently studying Biology, Chemistry, Maths and Physics alongside a Language and this might seem challenging, but I'm sure that I'll cope due to the Sixth Form ethos and support from our specialised teachers. We just started the Sixth Form and we've already been offered opportunities in the Scholars Programme at University of Liverpool, Mentoring programme with Y7 and this is only the beginning of a list that will surely strengthen my personal statement for university applications.



Romeo Rivera

Within the first couple of weeks of Year 12, I have been offered to participate in many things, for example EPQ, a voyager trip, Liverpool Scholars and ASPIRE programmes, along with many more subject related experiences. The Sixth Form team are already planning visits to raise our aspirations, we are going to visit Imperial College London and University of Cambridge. This school doesn't just guarantee me excellent grades but also complementary experiences tailored to my interests and career pathway. This is extremely crucial for me because my chosen pathway is very competitive. Studying A-Level Computer Science, Physics and Maths is challenging but I am confident that with the subject specialists they will all ensure that I achieve the grades required.



OUR PATHWAYS



Our elite pathways are proving hugely successful, supporting students to fulfil their potential not just locally, but nationally and internationally.

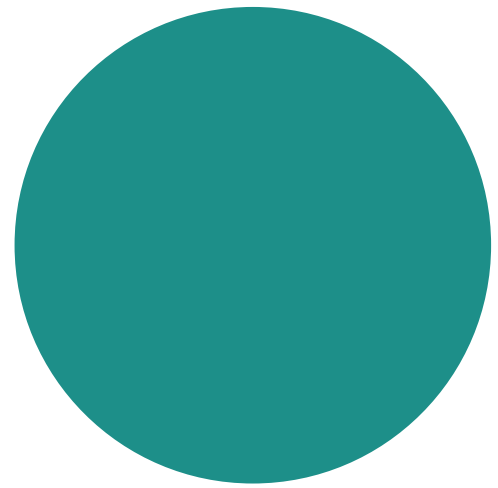
The next pages introduce our pathways, followed by the details of our diverse range of A-level and BTEC courses.

All of our students receive specialist one-to-one advice and guidance as you enrol in Sixth Form to ensure you are following the right courses, with a personalised coaching and progression programme throughout your two years with us.

We're also proud to present our Extended Project Qualification (EPQ) – a dynamic new addition to the timetable which allows you to study a highly specialised area of your own interest and receive an AS-level qualification towards university entry.

Each of our subjects are accompanied by a wide range of extra-curricular activities, trips, workshops and masterclasses, designed to make you stand out from the crowd when you take your next steps after Sixth Form.

Exponentials Pathway



Suitable Subjects

A-Level Mathematics
A-Level Further Mathematics
A-Level Physics
A-Level Computer Science
A-Level Economics

Careers

Investment Analyst, Statistician, Accountant, Data Scientist, Software Engineer, Financial Trader/Analyst, Research Scientist, Doctor, Engineer, Architect.

University Courses/

Apprenticeships
Applied Mathematics, Pure Mathematics, Computer Science, Cybersecurity, Economics, Engineering

Experiences/Partnerships

Visit to Oxford University for Maths lectures/seminars, Team Maths Challenge, UKMT, Olympiad, Sixth form MAT & STEP club, TMUA tests, UoL Advanced Maths Support Group

Maths and Further Maths are two of the most desirable A-Levels, sought after by universities and employers. By immersing yourself fully in this dedicated maths pathway, you will get the experiences, skills, and qualifications required to move onto the very best degree courses in the country at world renowned universities such as Oxford, Cambridge, or other Russell Group institutions.

As a student of our Exponentials pathway you will enjoy working with specialist teachers in mechanics, statistics, and pure maths in a creative and engaging environment to develop the additional skills of collaboration, presentations, and communication. Exponentials is so much more than working on complex equations, it's learning how to be a professional mathematician for a successful future career.

Subject Specialists



Mr Duff



Mr Fardey



Mr Allen



Mr Hands

Science Scholars Pathway



Suitable Subjects

A-Level Biology
A-Level Chemistry
A-Level Physics
BTEC Medical Science
A-Level Maths
A-Level Computer Science
A-Level Further Maths
A-Level Psychology

Careers

Statistician, Accountant, Data Scientist, Software Engineer, Financial Trader/Analyst, Research Scientist, Doctor, Engineer.

University Courses/ Apprenticeships

Medicine, Microbiology, Pharmacology, Biomedical Science, Forensic Science, Conservation Biology, Marine Biology, Biochemistry, Pharmaceutical Science, Biomedical Engineering, Geophysics, Astronomy, Theoretical Physics, Astrophysics & Cosmology.

Experiences/Partnerships

Isaac Physics workshops at local universities, Work placement opportunities, Lab Schools Programme, Catalyst Science Discovery Centre lab experiences, Farm Urban hydroponics partnership

Our Science Scholars pathway has been purpose built to blend the skills, qualifications, and experiences that you will need to move onto the best university-based science programmes in the country. So if you are aiming to become a doctor, research scientist, or build a career in any of the specific branches of science, this is the pathway for you.

Working with a dedicated team of specialist tutors in each of the separate science disciplines throughout your time at A-Level, you can be confident that you will have the resources available to you to achieve your ambitions. With our dedicated sixth form laboratories and close affiliations with local and national universities you will gain more than just qualifications, that will prepare you for a future as a professional scientist.

Subject Specialists



Dr Bargery
Physics



Dr Pepper
Physics



Mrs Blunt
Biology



Mr Erickson
Chemistry



Miss Lain
Applied Science

Quantum Pathway



Suitable Subjects

A-Level Computer Science
A-Level Mathematics
A-Level Further Mathematics
A-Level Physics
A-Level Economics
BTEC Business Studies
BTEC Engineering
A-Level Psychology

Careers

Software Developer, Big Data Analyst, App Developer/Programmer, Web/Games Developer, Systems analyst, Systems Architect, Network Engineer, Cybersecurity Analyst, Machine Learning Engineer.

University Courses/ Apprenticeships

Computer Science, Software Engineering, Cybersecurity

Experiences/Partnerships

VEXIQ robotics, Lego Mindstorms, Trips to Bletchley Park, Jaguar LandRover, First NW Virtual Railway Hub, Universities, and be part of our NLA eSports Team and compete in the local/national league.

Our newly launched quantum pathway is designed to offer students the perfect blend of skills and experiences in one of the fastest growing employment industries. Liverpool has a strong economic foundation in the digital sector, providing a wide range of opportunities for students to progress into employment or further education.

This pathway is for students who want to build a career in software engineering, cybersecurity, artificial intelligence, big data analytics, or any other related technical digital career. If you want to become a creator of technology and use your strong foundations in maths and computer science to fuel innovative projects, then this could be the pathway for you.

Subject Specialists

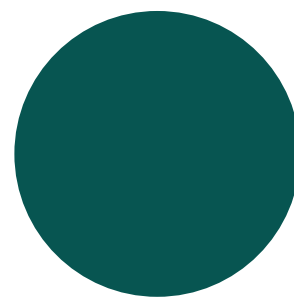


Mr Cross



Mr Connolly

English Pathway



Studying our English pathway will allow you to express yourself and have your voice heard, whether that be through opinionated debates and journalism regarding societal issues, or through your own creative writing. These subjects challenge your critical thinking and enhance your understanding of not just people within society, but the world. English Language and Literature is subjective which is perfect for a creative brain; there is never a right or wrong answer. This pathway opens up countless doors of life opportunities – being articulate, critical thinkers, which is what these subjects strengthen and develop, means you will be ready for any career path.

Suitable Subjects

A-Level Literature
A-Level Language
A-Level Sociology
A-Level Psychology
A-Level History

Careers

Law
Journalism
Advertising
Forensics
Computing
Teaching
Lexicographer
Lecturer

University Courses/ Apprenticeships

English
English Literature
Creative Writing
Linguistics
Law
Sociology
Psychology
Journalism
History
Film/Media
Government and Politics

Experiences/Partnerships

Theatre Trips
University Masterclasses
Collaboration with industry partners such as boohoo.com
Trip to London

Subject Specialists



Miss Matthews
English Language



Mr Denholm
English Literature



Mr Parsons
English Literature/
Language

Engineering Pathway



Engineering is one of the greatest areas of economic growth in the UK, and our dedicated Engineering pathway is the best route for students into this industry. As a student, the practical skills that you will gain, underpinned by theoretical knowledge and specific technical skills, is guaranteed to prepare you for a career in engineering.

The learning for our students throughout this pathway goes way beyond the classroom. There will be plenty of opportunities for our future engineers to work on live projects in the professionally equipped workshops, support the running of our dedicated scooter/motorbike tune up shop, or even work as part of our own NLA race team. The possibilities from this pathway will ensure that your learning has real context, and you gain the experience you need to become part of this exciting, fast growing industry.

Subject Specialists



Miss Walker



Mr Donnelly

Suitable Subjects

BTEC Engineering
A-Level Maths
A-Level Physics
A-Level Computer Science
A-Level Further Maths

Careers

Design Engineer, Electrical Engineer, Aerospace Engineer, CAD/CAM technician, Mechanical Engineer, Maintenance Engineer, Project Manager, Civil Engineer, Quantity Surveyor, Metallurgist

University Courses/ Apprenticeships

Civil Engineering, Automotive Engineering, Electronic Engineering, Aerospace Engineering, Mechanical Engineering, Robotics & Embedded Systems Engineering, Biomedical Engineering, Chemical Engineering

Experiences/Partnerships

Scot 66 shop, DynoJet Workshop, Jaguar 4x4 challenge, NLA Racing Team, Formula E Race car

Business & Economics Pathway



Suitable Subjects

BTEC Business
A-Level Economics
A-Level Maths
A-Level Computer Science
A-Level Psychology
A-Level Sociology
A-Level History
A-Level English Language
A-Level English Literature
BTEC Travel & Tourism

Careers

Marketing, Business
Analytics, Sales,
Consulting, Accounting

University Courses/ Apprenticeships

Business Management,
Accountancy, International
Business, Business Finance,
Business Economics,
Business Management
& Law, Management &
Leadership, Business
& Marketing, Business
Analytics, Event
Management, Economics &
Politics

Experiences/Partnerships

Investec Investment
Banking Project, Deloitte
Masterclasses, KPMG
Accountancy workshops,
Bank of England visits,
Invest for Success
Programme, Young
Enterprise Programme

Our Business and Economics pathway can be customised to suit your preferences, with a wide range of academic and vocational courses available to choose from as the ideal starting point on your way to becoming a business professional.

With a focus on Business, Finance, and Law, students on this pathway will be learning how they can move into an industry that employs over 93,000 people in over 12,000 companies in the Liverpool City Region alone. No matter the focus of the company, business, finance, and law professionals will always be in high demand for their vital knowledge and experience.

Subject Specialists



Mr De Silva



Mr Johnston

Creatives Pathway



Studying creative subjects enhance the mind and the hand. It will challenge your fine motor skills, your problem solving and your creativity. The world desperately needs people who can think differently and engage with others. This pathway will support you to do this. No matter what future career you choose, if you can arrange, present, communicate and display material in a way that is visually pleasing you will have an advantage.

This programme will support you to progress to further and higher education. It will improve your expression and your understanding of the creative process while building a solid portfolio of work for university interviews. There is unprecedented growth in demand for artists, musicians and designers, linked to our increasing consumption of the internet.

Suitable Subjects

A-Level Art
BTEC Performing Arts
A-Level Film
BTEC Music
A-Level English Literature
A-Level History

Careers

Actor/Performer, Director, Screenwriter, Artist, Curator, Journalist/Critic, Writer/Author, Film Producer, Graphic Designer, Musician, Singer/Songwriter

University Courses/ Apprenticeships

Fine Art, Art & Design, History of Art, English Literature, Creative Writing, Drama & Theatre, Writing for Broadcast, Film & Television Studies, Live Events Production, Music, Dance, Performing Arts, Acting, Costume Design, Musical Theatre.

Experiences/Partnerships

Arts Emergency Mentoring Programme, Guest speakers, Industry masterclasses, Live performances, University residencies

Subject Specialists

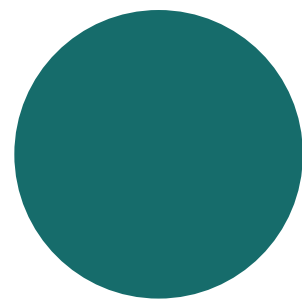


Mrs Senior
Performing Arts



Mrs Holmes
Art

Sports Honours Pathway



As you might expect at a Sixth Form in the heart of North Liverpool, Sport is one of our most popular and successful pathways. Our Sports Pathway combines physical activity with physiotherapy, nutrition, coaching and teaching. Our purpose-built state-of-the-art sports facility includes a full-size AstroTurf pitch for football and hockey; three netball courts and tennis courts; two 11-a-side grass football pitches, a rugby pitch, three outdoor basketball courts, a sports hall, fitness suite and four modern sports studies classrooms.

Our focus on the Sport Pathway is as much on what happens outside the classroom as inside. You'll get the opportunity to launch and run sports events using NLA facilities and work with students from other schools and local community groups to really make a difference in your sporting specialism.

Suitable Subjects

BTEC Sports
BTEC Applied Science
BTEC Travel & Tourism
A-Level Biology
A-Level Psychology
BTEC Health and Social Care
BTEC Business

Careers

Physiotherapist, Personal Trainer, Sports Coach, Sports Development Officer, Sports Therapist, Nutritionist, Sports & Exercise Psychologist, Exercise Physiologist, Fitness Centre Manager, Clinical Scientist,

University Courses/ Apprenticeships

Physiotherapy, Applied Sports Science, Sports & Exercise Science, Sport & Management, Sport & Exercise Psychology, Health Science, Sport Coaching & Fitness, Sport Studies, Adventure Sport Science, Coaching & Sports Development, Sports Therapy & Rehabilitation, Sports Journalism, Sports TV and Radio.

Experiences/Partnerships

Local/National/
International competitions,
Event management and production, stadium visits, outward bounds trips.

Subject Specialists



Miss Williams



Mr Spencer

Healthcare Pathway



This is a practical pathway for young people interested in entering a caring profession such as Nursing, Midwifery or Mental Health Care. It will offer you the chance to combine the theory you need to succeed in your academic programmes alongside work experience and healthcare simulations which will help you put your learning into practice.

If you are looking to secure a career that focuses on people and are the type of dedicated professional that is always looking to put the needs of others first, then this pathway is the first step on your journey to becoming a Healthcare Hero.

Suitable Subjects

BTEC Health & Social Care
BTEC Applied Science
BTEC Travel & Tourism
BTEC Business
A-Level Psychology
A-Level Sociology

Careers

Nurse, Healthcare Assistant, Occupational Therapist, Social Worker, Youth Worker, Health Service Manager, Community Development Worker, Mental Health Practitioner, Medical Sales Representative, Counsellor, Dental Hygienist, Dental Technician.

University Courses/ Apprenticeships

Nursing, Mental Health Nursing, Public Health, Health and Social Care, Social Care Practice, Learning Disability Nursing, Social & Community Work, Healthcare Practice, Youth Studies, Adult Nursing, Tourism Management.

Experiences/Partnerships

Hospital & care service visits, Work experience programmes in healthcare settings, collaborative mock ward work skills programme, Professional Masterclasses.

Subject Specialists

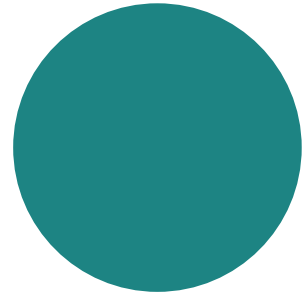


Miss Sage



Mrs Hart

Social Sciences Pathway



Suitable Subjects

A-Level Psychology
A-Level Sociology
A-Level Economics
A-Level English
A-Level English Literature
A-Level History
BTEC Business
BTEC Travel & Tourism
BTEC Applied Science
BTEC Sport
A-Level Spanish

Careers

Clinical Psychologist,
Counselling Psychologist,
Forensic Psychologist,
Sports Psychologist,
Border Force Officer,
Psychotherapist, Policy
Officer, Youth Worker, Civil
Service Administrator,
International Aid
Development Worker,
Public Relations Officer,
Social Worker, Probation
Officer, Advice Worker,
Community Development
Worker, Charity Officer,
Advice Worker,

University Courses/ Apprenticeships

Psychology, Anthropology,
Psychology and
Counselling, Forensic and
investigative Psychology,
Criminology, Clinical
Psychology, Public
Services, Sociology, Social
Science, Economics,
English, Journalism,
Business Psychology,
Sports Psychology.

Experiences/Partnerships

University masterclasses,
visit to Freud Museum,
Research project
opportunities, Virtual Work
Experience Programmes.

The social sciences pathway is an ideal introduction to some of the most complex and challenging issues we face as a community and as a nation. You will build an understanding of health, wellbeing, social justice, social change and the connection between where we live and our life chances.

This is the ideal pathway for you if you like to question the status quo, and importantly solve the problems that we face. You will have the opportunities to consider the ethics of your decisions and present them in debates. You will have the time to ask questions and find the answers through a range of research methodologies. You will be able to use both your numerical and your communication skills to present your findings.

Subject Specialists



Miss Devitt
Psychology



Miss Mavris
Sociology



WHAT SHOULD I STUDY?

Whatever your ambition, we've got A-levels and Applied courses (including BTEC/CTEC) to exceed your expectations.



North Liverpool Academy, Sixth Form has courses designed to give you the best possible foundation in your favourite subjects to prepare you for your future aspirations. We worked closely with universities and employers to provide students with the necessary learning experiences so that you are geared up for corresponding higher education curricula.

A-LEVEL OR APPLIED COURSES?

We offer both A-levels and Applied courses and both types of courses can be used to get into university. They both carry UCAS tariff points; an A-level Grade A is the equivalent to an Applied course Distinction (A* is Distinction*).

A-LEVELS

- You can choose any combination of three A-level subjects, or even study them alongside Applied courses.
- Some A-levels include some coursework but are mostly graded through exams.
- These courses are general and academic and ideal if you want to keep your career choices open.
- In some cases, it might be possible to study four A-levels but you will need to discuss this with our Admissions Team upon application.

APPLIED COURSES

- There are two different options when studying an Applied course:

Diploma - equivalent to two A-levels

Extended Certificate - equivalent to one A-level

- You can choose to study a mix of Applied courses and A-levels, as long as they add up to the equivalent of three A-levels.
- Applied courses are assessed by coursework, with some examined elements.
- These courses are more practical and a great choice if you already have an interest in a specific job area.

ELECTIVE STUDY

You will have the opportunity to study additional courses on top of your chosen pathway, this includes EPQ, Cyber EPQ, Languages, Sports Leaders, Silver Duke of Edinburgh and Student Leadership programme.

A-Level Courses

We offer a wide variety of A-level qualifications, delivered by our Sixth Form team of specialist teachers.

Our A-level courses are built upon a foundation of excellent teaching in the classroom, but every student benefits from the opportunities to consolidate and extend their learning. You'll experience our world-class facilities and a diverse programme of enrichment and extra-curricular activities.



Art

You'll participate in practical and theoretical workshops, experimenting with a wide range of media in order to express ideas. This helps you develop a wide range of transferable skills studying Fine Art including creativity, problem-solving, organisation and communication skills.

All practical work is underpinned by contextual sources and gallery visits, to engage with artwork first hand.



Biology

Biology is the study of living things, ranging from bacteria and yeasts that both nourish and threaten our health, to the plants that provide oxygen and the range of mammals and fish that walk the land and swim in the oceans.

A-level explores the breadth of Biology, from molecules, through cells to organisms, at a time when it is now possible to generate simple living organisms from DNA sequences and edit our own genomes to cure complex diseases.



Chemistry

You will explore the diversity of the elements at an atomic level and how subatomic particles contribute to the reactions we rely upon in living cells, drugs and factories. You understand how chemistry provides us with the food we eat, the clothes we wear – and the smart phones we often depend on!



Computer Science

Our A-Level Computer Science qualification helps students understand the core academic principles of computer science. Classroom learning is transferred into creating real-world systems through the creation of an independent programming project. Our A-Level will develop the student's technical understanding and their ability to analyse and solve problems using computational thinking. Students will complete complex technical investigations and practical programming tasks.



English Language

Gain an understanding of how language is woven into our everyday lives, to understand the language that influences our thoughts, actions and even what we believe to be real. You'll also develop an understanding of the subtleties of language use across societies, business and politics and an awareness of how language can influence behaviour.



English Literature

English Literature A-level is universally recognised by leading universities as a critical asset if you wish to apply for degree courses in Humanities or Social Sciences. English Lit develops your ability to think critically and express your own ideas freely. It is an excellent foundation for careers that demand a command of spoken and written English, including law, journalism and media.



Film

Studying Film at A-Level will enable you to enjoy and appreciate film and its cultural value and to understand the role film plays in our daily lives and the lives of others. You will develop a critical understanding of film through film texts, concepts, and historical perspectives by creatively applying practical skills and you will be able to explore production processes, technologies, and contexts.



Further Maths

Further Maths allows the most talented mathematicians to study varied and increasingly complex areas of mathematics in greater depth. Further Maths is the most sought-after A-level for those looking to study Maths, Physics, Economics, Computing or Engineering at university.

The course is assessed over four exams, two core exams where you'll encounter complex numbers, matrices and differential equations alongside two option modules chosen from Further Mechanics, Further Pure, Further Statistics or Decision Maths.



History

A-level History covers two periods: The Tudors; Democracy and Nazism: Germany 1918 – 1939, alongside a non-exam assessment module.

The non-exam assessment is worth 20% of your A-level grade, comprising a 3,000-word essay across a 100 year time period of your own choice. This historical investigation allows students to explore a topic of personal interest and promotes skills valued by universities and professions.



Maths

A-level Maths is the best opener of doors into employment and employers put strong mathematical and problem-solving skills as highly desirable for an array of careers. It is a challenging and rewarding course, which enables students to develop a love for maths and a natural curiosity for its applications.

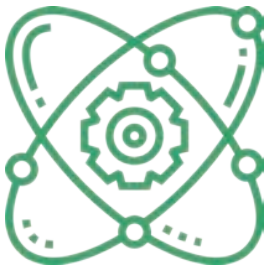
A-level Maths is assessed through three exams – two are pure mathematics, consisting largely of Algebra, Calculus, Logarithms, Vector Geometry and Trigonometry. The third paper is an applied mathematics paper split equally between Statistics and Mechanics.



Economics

Studying A-Level Economics will enable you to cover key topics that affects our everyday lives such as tax, interest rates, wealth, and inflation. Economists provide the tools by which analysts can study the costs, benefits and effects of government policies in a range of areas that affect society.

Economics A-level is internationally recognised and respected across all leading universities and industries. By studying Economics, it will provide a powerful lens through which you can view the complexities of a global society.



Physics

Physics probes the foundations of what makes the universe tick. From the largest structures imaginable to the smallest possible scales of interaction, Physics tries to answer how the phenomena of our world and universe occur.

The A-level course is designed to equip curious minds with the knowledge and skill set needed to begin to answer the biggest questions humans currently face.



Psychology

Psychology is the scientific study of the mind and human behaviour. Students on this course will consider issues such as forgetting, cultural differences in attachment, reasons for offending and treatments for mental disorders.

Students acquire a broad range of skills, such as critical thinking, the ability to plan and carry out research projects, essay writing and revision techniques – many of which are transferable and will provide an ideal base for their future university or work life.



Sociology

Sociology is concerned with social behaviour and attempts to answer questions about why people behave the way they do. For example, why do girls outperform boys in the education system? Why is there still poverty in the 21st century? What explains the growth in violent street crime in the past few years? Sociology makes you think!

Sociology is an accessible A-level that manages to bridge the arts and sciences, dealing with data and theories alongside argument debate and creative thinking.



ADVANCED APPLIED COURSES:

All our BTECs are Level 3 (A-level equivalent) qualifications that can be taken alone or alongside other A-level courses. BTECs are vocational qualifications which means they are focused on developing an understanding of the world of work and provide an opportunity for you to practice relevant skills in real-life professional settings.



Applied Science

Our Applied Science BTEC provides a vocational pathway into Level 3 Science. The course is lab-based, so you'll gain an enormous breadth of practical experience beyond the purely theoretical. This is the perfect qualification for anyone who wants to go into an apprenticeship or university healthcare courses, such as Nursing, Midwifery, Forensic Science, Physiotherapy, or Sports Science.



Business

The Business BTEC gives you a broad understanding of business and its related functions, such as marketing, finance and human resources. This course provides you with the opportunity to immerse yourself in the world of business and gain transferable skills, such as teamwork, problem-solving and researching.



Engineering

The BTEC Engineering programme is a hands on, practical course. Over the two years, students will be encouraged to advance their engineering skills set through study of mechanics, electronics, materials science, mathematics and computer aided design (CAD). Many students who enjoy and successfully complete this course progress into Higher Education or employment in the engineering sector.



Health and Social Care

This BTEC is a National Level 3 qualification, equivalent to two A-levels and perfect for students wanting to go into the health and social care sectors. There are eight units to the course, of which two are externally assessed exams, one is an externally assessed controlled assessment and five are internally assessed pieces of coursework. Our most recent Health and Social Care students have progressed to both jobs and university study in nursing, social work, childcare, midwifery and the probation service.



Music

The BTEC Level 3 Music course will offer students the key knowledge and practical skills required for their potential chosen career as a freelance musician. Students will study various areas of the music industry which should give you the skills to understand music, write your own songs and perform them for live performances and recordings. You will need to demonstrate your ability to play an instrument or sing and understand music technology to join this course.



Medical Science

Our Medical Science BTEC provides a vocational pathway into Level 3 Science. The course is laboratory based with external examinations alongside completion of coursework. Students will gain a wide range of practical experience alongside theoretical knowledge that will be invaluable when going on to study practical courses. This is an appropriate qualification for anyone wanting an apprenticeship or to go to university health care courses such as, physiotherapy, sports science, nursing, midwifery or paramedic sciences.



Sport

The Level 3 Diploma in Sport at NLA 6th is not just about being able to play sport; it will provide you with the skills, knowledge and understanding to progress onto University level sport-related programmes such as Sport and Physical Education, Sport Science, Physiotherapy, Sports Coaching and Development or Sport and Leisure Management.

Sport BTEC is offered at NLA 6th Form as both a single or double award course, our gym and outdoor AstroTurf facilities are beyond compare and in with close proximity to Anfield our students benefit from working with the Anfield Foundation and participation in match day events. Our Sports BTEC students progress to study sports science and coaching at elite institutions such as St Georges Park and Loughborough University.



Performing Arts

This course is designed for students interested in vocational training in the arts and performance. The Performing Arts BTEC is a step closer to a career in the television, theatre, film and dance industry, developing the skills and experience you'll need as a professional in the creative sector and beyond. The course includes practical workshops and skills development alongside learning about the production process and analysing professional performances.



Travel and Tourism

The Travel and Tourism BTEC provides a highly specialist work-related qualification in the travel and tourism sector. You will study real world case studies and develop the skills and knowledge needed to run events, organise holidays and progress to work in the dynamic world of travel and tourism businesses. This BTEC provides a lot of transferable skills recognised by a range of employers such as leadership, communication, teamwork and problem-solving.

Pathway Plus

Preparing for your future is an important part of your time at NLA Sixth Form and the Pathways Plus Programme offers you specific career related activities that will support you to achieve your career aspirations.



Honours Programme

A tailored programme for the highest achieving students designed to prepare them for applications to the most competitive universities including Oxford and Cambridge. It includes trips and residential visits to universities. Students will be enrolled onto the successful 'Aspire' Programme for bespoke support in applying to Oxbridge and subject focused tutorials. Students will also be enrolled on the Sutton Trust Scholarship Programme. Students will have an NLA Alumni Mentor and complete a leadership development programme through EtonX.

EPQ

All students will complete an EPQ, an Extended Project Qualification. This gives you the opportunity to carry out a research project on a topic of personal interest or importance to you; academic or vocational, practical or theoretical. EPQ is an AS-Level (half an A-level) qualification, graded A*-E and is worth up to 28 points towards your university entry. Many universities, including Liverpool, Leeds and Southampton, now make reduced grade offers to students completing an EPQ in recognition of the skills, maturity and understanding the qualification provides.

Coaching/ Mentoring

All students will receive 1:1 coaching & mentoring through our student performance programme. Selected students will also be eligible to complete training in coaching and mentoring and become peer coaches.

Professional Certifications

Depending on your course choices, you may be able to supplement your learning with a professional certification that will allow you to access many more career options and make you the standout candidate from the rest of the field when applying for your university place or degree level apprenticeship. Professional certifications work alongside your qualifications and are accredited by companies such as Microsoft, Autodesk, CSCS, or the British Computing Society. Professional certification will be tailored based on your pathway choices.

Experiential Visits & trips

All students will get the opportunity to attend visits to universities, workplaces, and events across the city, nationally and internationally. The developments of our international work placement/experience programme will see a small group of students engage in work placements in large multi-national organisations across Europe and the rest of the world.

Community Projects

All NLA students will have the opportunity to be a part of some of our wide-ranging community based projects, such as primary school outreach and support events, sporting tournaments and events, drama and theatre performances for local community members, the development of the Scoot66 shop and brand, or even becoming involved in NLA's fully functioning race team and head out to the next series of race events.

Dedicated Careers Guidance Counsellor

All sixth form students have access to a dedicated trained careers guidance counsellor to help them with the difficult decisions of choosing the right universities, courses, or apprenticeships.



Professional Masterclass Visiting Lectures

Links with local and international businesses allow us to deliver masterclasses and lectures from some of industries top professionals.





The iconic NLA building is a state-of-the-art learning environment where our Sixth Form students work in cutting-edge facilities in science, sports, engineering and the arts.

Art

Modern art studios and ceramics kiln rooms to enable our Sixth Form students to fully explore their creative potential.

Study Space

Well-equipped library, in addition to the Sixth Form study centre, giving students a choice of location for independent study and a quiet and focused place to work.

Student Centre

A Sixth Form study centre, open throughout school holidays, with laptops and computers providing a learning environment accessible to every student.



Media

High spec technology rooms alongside music, radio, TV and recording studios for our digital/creative students.

Labs

Dedicated Sixth Form laboratories, equipped to university standard to allow our students to undertake practical work, such as gel electrophoresis, outside and beyond the scope of school laboratories.

Workshops

Specialist engineering centre with a motorcycle engineering workshop, Dynojet rolling road – one of only two in the North West – and a full range of engineering and design machinery, including 3D printers, laser cutters and CNC mills.

Performance

Dance and drama studios with a theatre-quality auditorium, including an audio-visual control suite.

Sport

Superb modern sports and leisure facilities for our Sixth Form students, including three full-size football pitches, a floodlit AstroTurf playing field, gym and fitness suite, indoor sports hall and multi-use games area.

Applying to



November

Come to our Open Evening in November to find out about our subjects, meet students, our subject experts and our unique learning environment.

February

February is our deadline for applications. Course consultation meetings will then run between February and March.

April

You will receive a decision regarding your application by the end of April and be invited to a course consultation if successful.

July

Once GCSE examinations are over, you will be invited to our Taster Days. This will give you an opportunity to come along and have a trial day at North Liverpool Academy Sixth Form. You will experience lessons in your chosen subjects and get to experience life as a NLA Sixth Form student.

August

On results day, if you have successfully met the course requirements, your place at Sixth Form will be confirmed and you will receive a welcome pack with further information about starting in September.

HOW TO APPLY



To find out more, arrange a tour of the Sixth Form, speak with a course advisor, or make an application contact us by e-mail 6thformapplications@northliverpool.co.uk or telephone 0151 260 4044.

Our website
nlasixthform.co.uk

is a great place to find out more about the courses we offer, discover our state-of-the-art facilities, and get to know our teachers and students.

I hope our prospectus has given you a feel for what it's like to continue your studies after high school with us at NLA Sixth Form.

I expect you'll have questions about taking your next steps after GCSE, our Sixth Form team would love to hear from you.



Apply online today!

<https://northliverpoolacademy.applica.com/>



**EXPLORE YOUR
FUTURE**